

**"This Movie Redefines 3D!
A Thrilling Journey For The
Whole Family!"**
-Eric Riddle, NBC-TV, SEATTLE

**"A Superb
Family
Adventure!"**
-Jeffrey Lyons,
NBC/LYONS & BAILES REEL TALK

**JOURNEY
TO THE CENTER OF THE
EARTH**

3D in
Select
Theaters

A realD 3D Motion Picture Event



realD 3D

NEW LINE CINEMA

www.journeymovie.com

MOBILE USERS: For showtimes - text keyword along with your ZIP CODE to 43KIX (43549)
Journey to the Center of the Earth Text JOURNEY • Journey to the Center of the Earth 3D Text JOURNEY 3D

NOW SHOWING PRESENTED IN realD 3D

WASHINGTON, DC AMC LOEWS GEORGETOWN 14 K St NW 800/FANDANGO #621 REGAL CINEMAS GALLERY PLACE STADIUM 14 707 7th St NW 202/393-2121	MUVICO EGYPTIAN 24 At Arundel Mills 443/755-8992 REGAL CINEMAS BOWIE STADIUM 14 15200 Major Lansdale Blvd 800/FANDANGO #454	VIRGINIA AMC HOFFMAN CENTER 22 Eisenhower Ave & Telegraph Rd 703/998-4440 AMC POTOMAC MILLS 18 I-95 - Exit 156 Woodbridge 703/998-4262 AMC TYSONS CORNER 16 Routes 7 & 123 McLean, VA 703/998-4262	NATIONAL AMUSEMENTS CENTREVILLE MULTIPLEX CINEMA Centreville, VA 703/602-4060 NATIONAL AMUSEMENTS RESTON TOWN CTR. MULTIPLEX Reston, VA 703/602-4060 REGAL CINEMAS COUNTRYSIDE STADIUM 20 Sterling, VA 800/FANDANGO #394 REGAL CINEMAS MANASSAS STADIUM 14 Exit 47B off Interstate 66 800/FANDANGO #490	REGAL CINEMAS POTOMAC YARDS STADIUM 16 3575 Jefferson Davis Hwy 800/FANDANGO #690 UNITED ARTISTS FAIRFAX TOWNE CENTER 10 Fairfax, VA 800/FANDANGO #670 SPECIAL ENGAGEMENTS NO PASSES OR DISCOUNT COUPONS ACCEPTED
---	---	---	---	--

FOR ADDITIONAL 2D THEATERS CHECK YOUR LOCAL LISTINGS



Late-breaking news 24/7 dcexaminer.com

Modern Love: Public displays of affliction

By Robin Tierney
Special to The Examiner

"Celestial Pelvises"? No, it's not a band. It's a sparkly surgical-wired salvo in Modern Love, a new mind-pinching show at D.C.'s National Museum of Women in the Arts.

Modern Love presents 55 contemporary works donated by Heather and Tony Podesta, who forgo pretty for provocative. Consider that the above-referenced mobile previously decorated the collectors' dining room.

Head-turners include Cathy de Monchaux's "Red" and "Don't Touch My Waist," which elicit a domino effect of affect: intrigue, fascination, discomfort, repulsion. "Red" — made of tufted velvet, leather straps, and metal studs and clamps — triggers a game of "what is it?" Cap, arachnid, portal, orifice, oracle? Organic or mechanic, erotic or gory?

The powerful body imagery is counterbalanced by less graphic but equally suggestive fare.

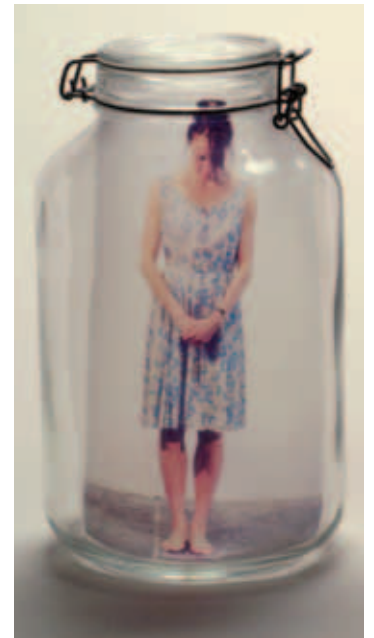
Sabrina Mezzaqui has decorated panels of clear acetate sheets with thousands of dots using a white felt-tip pen. These entrancing curtains suggest fallout from the quest for domestic bliss: perfectionism and obsession.

In her neo-Netherlandish paintings, Tanja Rector obscures

If you go

'Modern Love: Gifts to the Collection From Heather and Tony Podesta'

- » **VENUE:** National Museum of Women in the Arts; 1250 New York Ave. NW
- » **COST:** \$10 for adults, \$8 for seniors 60 and older and students, and free for youth 18 and under
- » **INFO:** 202-783-5000; nmwa.org



COURTESY PHOTO

domestic encounters with veils of off-white pigment. Switching media, she also canned the sardonic jars of "Preserve."

Other counterconventional offerings include "Blue Shift," for which car and motorcycle customizer L.C. Armstrong used a lighted firecracker in place of brush. In the video "Fall," Charlotte Gyllenhammar points her camera straight up at a woman suspended by her feet, skirt folds encircling her head. Look down: The hopelessness of her frightful plight is literally underscored by a ground-level component of the installation.

Sticking out like a sore thumb — rather, a soothing thumb — is what could pass as an outtake from a fashion shoot. "Where Do We Go From Here?" depicts a performance piece about adventurous,

accident-prone waifs who require rescue by "The Mod Squad." Okaaay. The creative team, which designed the arty apparel, goes by Icelandic Love Corporation. If you're now plagued by an earworm of some long-forgotten song, you're not alone.

Modern Love is no place to take a date or the kids. But it will set thoughts, if not heart, aflutter.

Enter To Win A \$100 Exxon Gas Card
in the

GAS IS BETTER THAN GOLD GIVEAWAY

Check your Sunday Examiner for this week's five winning names!

ENTERING IS EASY:

Send an e-mail to fillyourtank@dcexaminer.com.
Be sure to include your name, address and phone number.



dcexaminer.com

20 WINNERS

